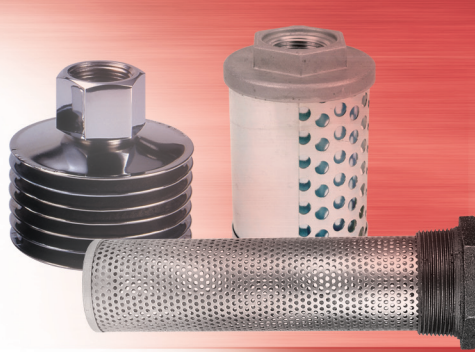
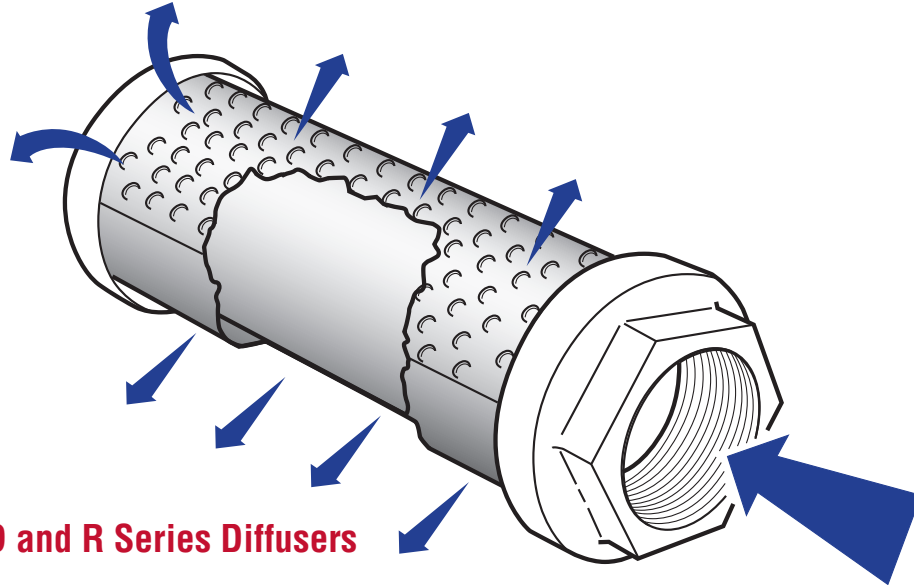




Fluid Power Specialist



Diffusers



Lenz LDFD, LTMD and R Series Diffusers

are designed to reduce aeration and foaming in the reservoir fluid caused by the return flow. The reduction in these small air bubbles assists any pump with cavitation tendencies and reduces down time by eliminating the need to constantly "bleed the circuit". Diffusers also reduce noise levels.

There are over 20 sizes of Diffusers available in 2 mounting styles with a maximum flow rate of 465 GPM.

The LDFD Diffuser consists of two concentric plated steel tubes both with rows of discharge holes positioned over 120 degrees of their circumferences but arranged on opposite sides. The tubes are bonded to two end caps a blind end and one threaded end. The inner tube has fewer holes than the outer, which allows the oil velocity to be reduced in two stages as it passes from the inner to the outer tube and then into the reservoir.

The LTMD Diffuser offers the same construction materials except there is only one tube assembly and it mounts through the tank wall.

R Series Diffusers consist of stacking Disc that slow down and spread out the returning oil. Diffusers make effective baffles but they must be below the oil level at all times, and they should be installed with the plain area on the outside tube facing the pump inlet.

See Lenz website www.lenzinc.com or catalog for further details

