



Fluid Power Specialist



Installation Instructions for LES Switches

Color coded top cap for identification of the switch circuit
A – RED, SPST / NO B – GREEN, SPST / NC C – BLACK, SPDT

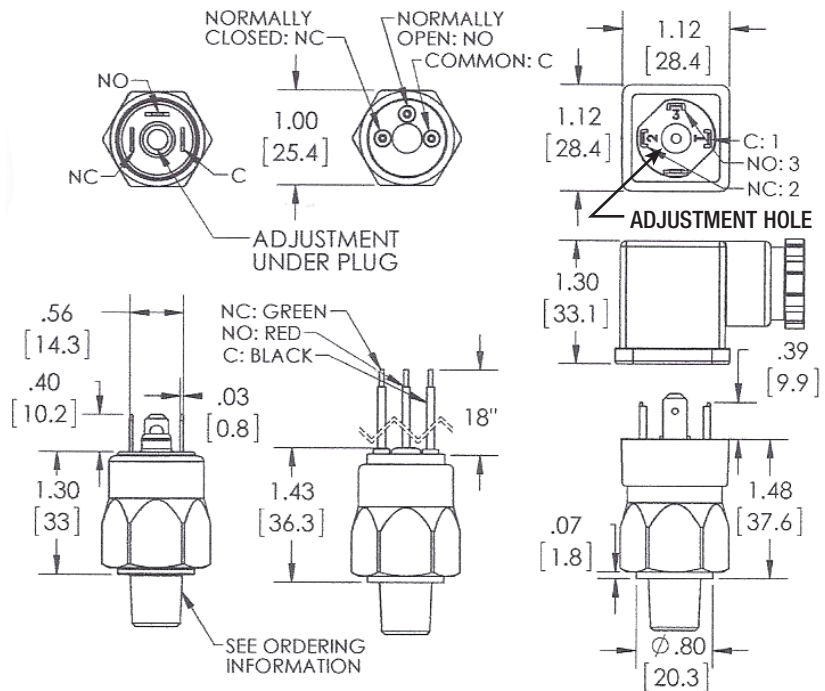


LES-FL



LES-HC

MODEL	ADJUSTMENT RANGE	AVERAGE DIFFERENTIAL	SET PRESSURE
P1	3-20 PSI (.2-1.4 BAR)	2-5 PSI (.13-0.4 BAR)	15 PSI
P2	15-80 PSI (1.03-6 BAR)	4-7 PSI (.27-0.5 BAR)	22 PSI
V1	5-28 IN Hg (160-948mb)	2-4 INHg (67-135mb)	5 Hg



FL Connection

HC DIN43650A Connection

Adjusting the Set Point

The LES switch is set at the factory at the settings shown above. The switch can be adjusted to any value within the adjustment range.

Step 1. For HC DIN models, remove the DIN connector securing screw, leaving the DIN adapter in place. Insert a 5/64" allen key into the hole in order to turn adjustment screw. If you have FL connector or Spade models remove the adjustment plug at the top and insert 5/64" allen key to adjust the range.

Step 2. For LES-P series turn the screw clockwise to increase the set point or counter-clockwise to decrease. For LES-V vacuum models turn the screw counter clockwise to increase the setting or counter-clockwise to decrease the setting.

