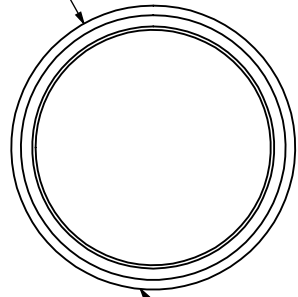


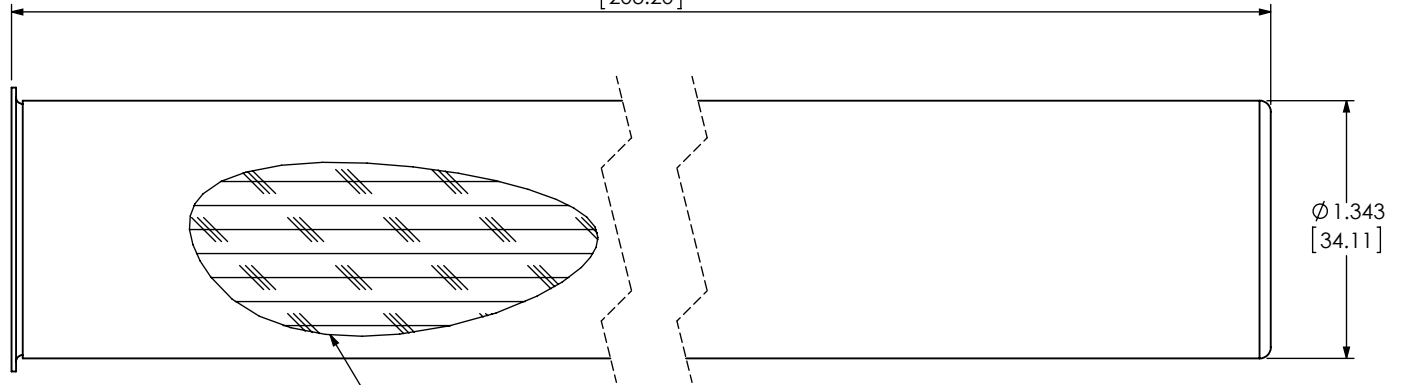
Ø 1.479
[37.56]



SS FLANGE

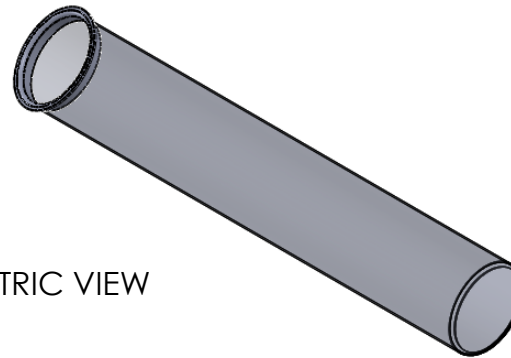
TOP VIEW

8.00
[203.20]



30 MESH SS

RIGHT VIEW



ISOMETRIC VIEW

MODEL :- 201075



UNLESS OTHERWISE SPECIFIED :

DIMENSIONS ARE IN INCHES
TOLERANCES:
FRACTIONAL $\pm 1/16"$ [1.56 mm]
ANGULAR: MACH $\pm 0.5^\circ$ BEND $\pm 1^\circ$
TWO PLACE DECIMAL $\pm 0.015"$ [0.38 mm]
THREE PLACE DECIMAL $\pm 0.010"$ [0.25 mm]

MATERIAL

FINISH

DO NOT SCALE DRAWING

DRAWN

NAME

DATE

CHECKED

S.P

11-01-2020

ENG APPR.

-

-

MFG APPR.

-

-

Q.A.

-

-

COMMENTS :

DESIGNED FOR:

DESCRIPTION:

STRAINER

SIZE

DWG. NO.

REV

A

PD - 3 7 9 4

SCALE 1:2

WEIGHT:

SHEET 1 OF 1

PROPRIETARY AND CONFIDENTIAL

THE INFORMATION CONTAINED IN THIS DRAWING IS THE SOLE PROPERTY OF
LENZ INC. ANY REPRODUCTION IN PART OR AS A WHOLE WITHOUT THE WRITTEN
PERMISSION OF LENZ INC IS PROHIBITED