



Push-On Filler Breather

Model NYPO Series

Specifications

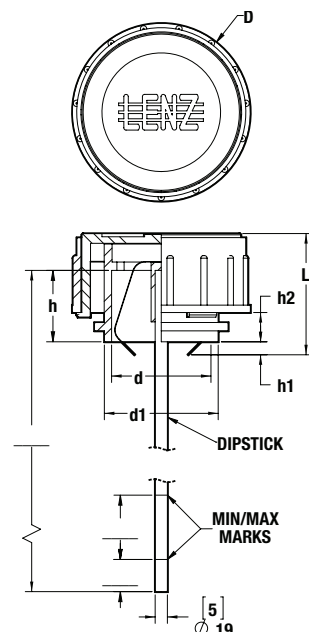
- PA66 nylon cap
- Maximum flow rate 160GPM, 22 CFM@1.5PSI
- 40 micron foam filter filtration
- Operating temperature -22°F to +212°F (-30°C to +100°C)
- Compatible with petroleum and mineral based fluids
- Fits over 1.5" (39mm) O.D. and 1.25 (32mm) I.D. tube
- Spring steel retention clips

Options Available

- Dipstick
- 10 micron foam filter



Optional Dipstick



Dimensional Detail

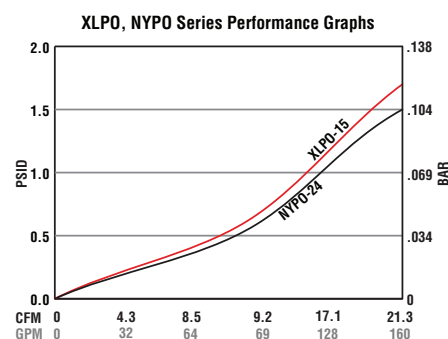
MODEL NO.		d	h	D	L	d1	h1	h2	LBS/GR
NYPO-24	in. mm	1.5" 39	1.1" 28	2.8" 70	1.9" 48	1.8" 45	0.1" 3	0.3" 7	0.2" 67
NYPO-24-10M	in. mm	1.5" 39	1.1" 28	2.8" 70	1.9" 48	1.8" 45	0.1" 3	0.3" 7	0.2" 67

Assembly Ordering Code

NYPO-24 — 10M — DIP

Filtration		Options	
Omit	40 Micron	Omit	None
10M	10 Micron	Dip	Specify Length

See dipstick reference chart page 73b



Push-On Filler Breather

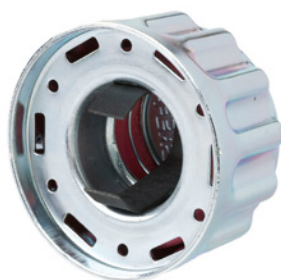
Model XLPO Series

Specifications

- Maximum flow rate 25 CFM, 190 GPM
- Steel shell nickel chrome
- 40 micron foam filter filtration
- Operating temperature -22°F to +212°F (-30°C to +100°C)
- Compatible with petroleum and mineral based fluids
- Fits over 1.5" (39mm) O.D. and 1.25 (32mm) I.D. tube
- Spring steel retention clips

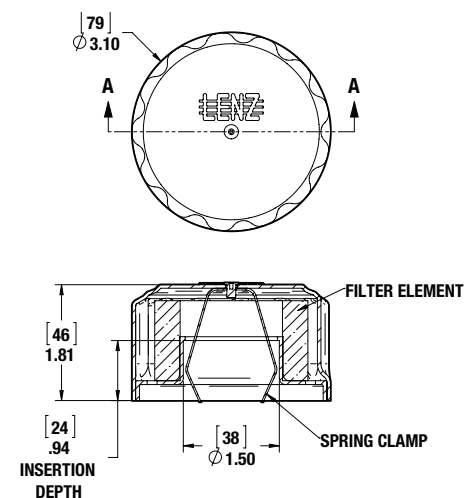
Options Available

- Dipstick
- 10 micron foam filter
- Black powder coat cap



XLPO Push On Breather

Push-on Type



Ordering Code

XLPO — 10M — 15 — *

Series		Filtration		Size		Options	
XLPO	Zinc	40	40 Micron	15	1 1/2" Diameter	Omit	None
BCP-XLPO	Black Powder Coat	10M	10 Micron			Dip	Specify Length

See dipstick reference chart page 73b



See Technical Bulletin TB.TA07.708 for further information at (Technical Data - www.lenzinc.com).



Dipstick reference chart

	Series	Markings	Type of Dipstick	Page	Lead Time
Quantity	NY, NY-LVB, NYF, LDP			17, 24, 30b	
1-24	Standard Length	No Markings	Cylindrical		2 Weeks
25-99	Cut to Length	No Markings	Cylindrical		2 Weeks
100-249	Cut to Length	Hash Markings	Cylindrical		4-6 Weeks
250+	Cut to Length	Hash Markings	Cylindrical		4-6 Weeks
250+	Cut to Length	Laser Markings	Blade		8 Weeks
Quantity	NYPF, NYPO, LDP	Markings	Type of Dipstick	34, 35b	
1-24	Standard Length	No Markings	Cylindrical		2 Weeks
25-99	Cut to Length	No Markings	Cylindrical		2 Weeks
100-249	Cut to Length	Hash Markings	Cylindrical		4-6 Weeks
250+	Cut to Length	Hash Markings	Cylindrical		4-6 Weeks
250+	Cut to Length	Laser Markings	Blade		8 Weeks
Quantity	NY-B, XLPO	Markings	Type of Dipstick	9, 34b	
1-24	Standard Length	No Markings	Blade		2 Weeks
25-99	Cut to Length	No Markings	Blade		2 Weeks
100-249	Cut to Length	Laser Markings	Blade		4-6 Weeks
250+	Cut to Length	Laser Markings	Blade		8 Weeks
Quantity	XL, 3 & 4, caps	Markings	Type of Dipstick	5, 6, 7b	
1-24	Standard Length	No Markings	Blade		2 Weeks
25-99	Cut to Length	No Markings	Blade		2 Weeks
100-249	Cut to Length	Stamp Markings	Blade		4-6 Weeks
250+	Cut to Length	Laser Markings	Blade		8 Weeks
Quantity	BF, LMB	Markings	Type of Dipstick	20, 22b	
1-24	Standard Length	No Markings	Blade		2 Weeks
25-99	Cut to Length	No Markings	Blade		4-6 Weeks
100-249	Cut to Length	Stamp Markings	Blade		8 Weeks
250+	Cut to Length	Laser Markings	Blade		8 Weeks
Quantity	ABFT, AFBB, AFBM	Markings	Type of Dipstick	23, 26b	
1-24	Standard Length	No Markings	Blade		4-6 Weeks
25-99	Cut to Length,	No Markings	Blade		4-6 Weeks
100-249	Cut to Length	Stamp Markings	Blade		8 Weeks
250+	Cut to Length	Laser Markings	Blade		8 Weeks
Quantity	NY-9-M52	Markings	Type of Dipstick	29b	
1-24	Standard Length	No Markings	Blade		4-6 Weeks
25-99	Cut to Length	No Markings	Blade		4-6 Weeks
100-249	Cut to Length	Stamp Markings	Blade		8 Weeks
250+	Cut to Length	Laser Markings	Blade		8 Weeks