

100 • Male Connector*Part Numbers Include body nuts, sleeves, "O-Rings" and Back-Up Washers.*

100 Number#	Male Tube O.D.	Connector Male Pipe Thread	Overall Length
100-2-2	1/8"	1/8"	1.12"
100-4-2	1/4"	1/8"	1.34"
100-4-4*	1/4"	1/4"	1.50"
100-5-2	5/16"	1/8"	1.34"
100-5-4*	5/16"	1/4"	1.50"
100-6-4	3/8"	1/4"	1.59"
100-6-2	3/8"	1/8"	1.43"
100-6-6*	3/8"	3/8"	1.62"
100-6-8*	3/8"	1/2"	1.81"
100-8-6	1/2"	3/8"	1.87"
100-8-4	1/2"	1/4"	1.87"
100-8-8*	1/2"	1/2"	2.06"
100-8-12*	1/2"	3/4"	2.06"
100-10-8	5/8"	1/2"	2.18"
100-10-4	5/8"	1/4"	2.00"
100-10-6	5/8"	3/8"	2.00"
100-10-12*	5/8"	3/4"	2.21"
100-12-12*	3/4"	3/4"	2.37"
100-12-8	3/4"	1/2"	2.37"
100-14-12	7/8"	3/4"	2.40"
100-16-16**	1"	1"	2.75"
100-16-12	1"	3/4"	2.56"
100-18-16	1 1/8"	1"	2.87"
100-20-20*	1 1/4"	1 1/4"	3.06"
100-20-16	1 1/4"	1"	3.06"
100-20-24*	1 1/4"	1 1/2"	3.12"
100-24-24*	1 1/2"	1 1/2"	3.25"
100-24-20	1 1/2"	1 1/4"	3.25"
100-28-24	1 3/4"	1 1/2"	3.25"
100-28-32	1 3/4"	2"	3.90"
100-32-32	2"	2"	3.90"
100-32-20	2"	1 1/4"	3.84"
100-32-24	2"	1 1/2"	3.84"

* Fittings with tube diameter bored through **Tube diameter bored through, optional

Tubing may be pushed all the way through the male connectors marked with an asterisk*. This exclusive feature has many uses in hydraulic or air circuitry. For other fittings with this feature see Series 250 (opposite page) and Series A100.

100-L • Long Male Connector*Part Numbers Include body nuts, sleeves, "O-Rings" and Back-Up Washers.*

100-L NUMBER#	MALE TUBE O.D.	CONNECTOR MALE PIPE THREAD	OVERALL LENGTH
100L-4-2	1/4"	1/8"	2.00"
100L-5-2	5/16"	1/8"	2.12"
100L-6-4	3/8"	1/4"	2.46"
100L-8-6	1/2"	3/8"	3.15"
100L-10-8	5/8"	1/2"	3.50"
100L-12-12	3/4"	3/4"	3.90"
100L-14-12	7/8"	3/4"	4.15"
100L-16-16	1"	1"	4.50"
100L-20-20	1 1/4"	1 1/4"	5.22"
100L-24-24	1 1/2"	1 1/2"	5.59"

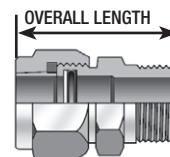
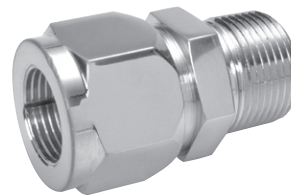
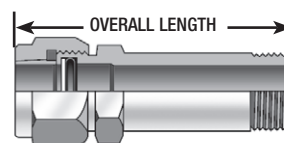
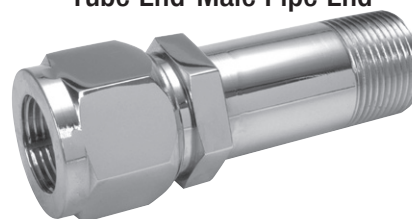
100-LL • Long Male Connector*Part Numbers Include body nuts, sleeves, "O-Rings" and Back-Up Washers.*

100-L NUMBER#	MALE TUBE O.D.	CONNECTOR MALE PIPE THREAD	OVERALL LENGTH
100LL-4-2	1/4"	1/8"	2.75"
100LL-5-2	5/16"	1/8"	3.00"
100LL-6-4	3/8"	1/4"	3.46"
100LL-8-6	1/2"	3/8"	4.34"
100LL-10-8	5/8"	1/2"	4.75"
100LL-12-12	3/4"	3/4"	5.40"
100LL-14-12	7/8"	3/4"	5.78"
100LL-16-16	1"	1"	6.25"
100LL-20-20	1 1/4"	1 1/4"	7.21"
100LL-24-24	1 1/2"	1 1/2"	7.84"

Stainless Steel Tubing

Lenz O-ring Seal tube fitting performs equally well on stainless steel tubing as with carbon steel tubing, but requires the use of stainless steel sleeves (#165-xxSS) and stainless steel buffer washers (#195-xx-SS), even when used with steel fittings. Example, when ordering: 100-12-12 with SS Sleeves.

When Ordering Lenz Fittings in all Stainless Steel Add SS To The Part Number. Example: 100-12-12-SS

**100
Extra Long Male Connector
Tube End-Male Pipe End****100-L
Long Male Connector
Tube End-Male Pipe End****100-LL
Extra Long Male Connector
Tube End-Male Pipe End**