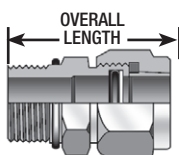


### A-100 MALE CONNECTOR • TUBE END- S.A.E. Straight Thread End



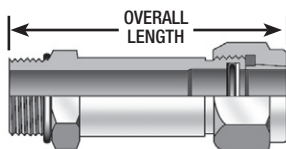
### A-100 • Male Connector

Part Numbers Include body nuts, sleeves, "O-Rings" and Back-Up Washers.

| Part no.    | Tube O.D. | S.A.E. Male Thread | Overall Length |
|-------------|-----------|--------------------|----------------|
| A100-2-2*   | 1/8"      | 5/16"-24           | 1.03"          |
| A100-4-4    | 1/4"      | 7/16"-20           | 1.28"          |
| A100-4-5*   | 1/4"      | 1/2"-20            | 1.28"          |
| A100-4-6*   | 1/4"      | 9/16"-18           | 1.34"          |
| A100-5-5    | 5/16"     | 1/2"-20            | 1.28"          |
| A100-6-6    | 3/8"      | 9/16"-18           | 1.41"          |
| A100-6-8*   | 3/8"      | 3/4"-16            | 1.47"          |
| A100-8-8    | 1/2"      | 3/4"-16            | 1.69"          |
| A100-8-6    | 1/2"      | 9/16"-18           | 1.66"          |
| A100-8-10*  | 1/2"      | 7/8"-14            | 1.78"          |
| A100-8-12*  | 1/2"      | 1 1/16"-12         | 1.94"          |
| A100-10-10  | 5/8"      | 7/8"-12            | 1.94"          |
| A100-10-8   | 5/8"      | 3/4"-16            | 1.88"          |
| A100-10-12* | 5/8"      | 1 1/16"-12         | 2.09"          |
| A100-12-12  | 3/4"      | 1 1/16"-12         | 2.22"          |
| A100-12-8   | 3/4"      | 3/4"-16            | 2.00"          |
| A100-12-10  | 3/4"      | 7/8"-14            | 2.13"          |
| A100-12-14* | 3/4"      | 1 3/16"-12         | 2.22"          |
| A100-12-16* | 3/4"      | 1 5/16"-12         | 2.22"          |
| A100-14-14  | 7/8"      | 1 3/16"-12         | 2.25"          |
| A100-14-16* | 7/8"      | 1 5/16"-12         | 2.25"          |
| A100-16-16  | 1"        | 1 5/16"-12         | 2.38"          |
| A100-16-12  | 1"        | 1 1/16"-12         | 2.38"          |
| A100-16-20* | 1"        | 1 5/8"-12          | 2.38"          |
| A100-20-20  | 1 1/4"    | 1 5/8"-12          | 2.63"          |
| A100-20-16  | 1 1/4"    | 1 5/16"-12         | 2.69"          |
| A100-20-24* | 1 1/4"    | 1 7/8"-12          | 2.63"          |
| A100-24-24  | 1 1/2"    | 1 7/8"-12          | 2.75"          |
| A100-24-20  | 1 1/2"    | 1 5/8"-12          | 2.78"          |
| A100-32-32  | 2"        | 2 1/2"-12          | 3.16"          |

\*Fittings with tube diameter bored through \*\*Tube diameter bored through, optional  
Tubing may be pushed all the way through the male connectors marked with an asterisk\*. This exclusive feature has many uses in hydraulic or air circuitry.

### A-100-L LONG MALE CONNECTOR • TUBE END S.A.E. Straight Thread End

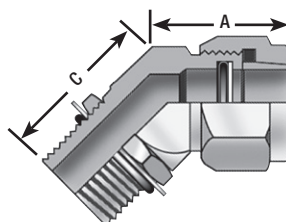
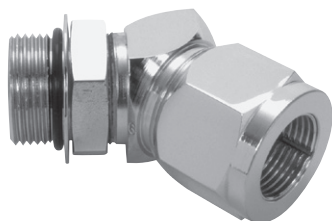


### A-100-L • Long Male Connector

Part Numbers Include body nuts, sleeves, "O-Rings" and Back-Up Washers.

| Part no.    | Tube O.D. | S.A.E. Male Thread | Overall Length |
|-------------|-----------|--------------------|----------------|
| A100L-2-2   | 1/8"      | 5/16"-24           | 2.03"          |
| A100L-4-4   | 1/4"      | 7/16"-20           | 2.25"          |
| A100L-5-5   | 5/16"     | 1/2"-20            | 2.31"          |
| A100L-6-6   | 3/8"      | 9/16"-18           | 2.59"          |
| A100L-8-8   | 1/2"      | 3/4"-16            | 3.03"          |
| A100L-10-10 | 5/8"      | 7/8"-14            | 3.47"          |
| A100L-12-12 | 3/4"      | 1 1/16"-12         | 4.03"          |
| A100L-14-14 | 7/8"      | 1 3/16"-12         | 4.22"          |
| A100L-16-16 | 1"        | 1 5/16"-12         | 4.69"          |
| A100L-20-20 | 1 1/4"    | 1 5/8"-12          | 5.22"          |
| A100L-24-24 | 1 1/2"    | 1 7/8"-12          | 5.75"          |
| A100L-32-32 | 2"        | 2 1/2"-12          | 6.97"          |
| A100-24-20  | 1 1/2"    | 1 5/8"-12          | 2.78"          |
| A100-32-32  | 2"        | 2 1/2"-12          | 3.16"          |

### A-350 MALE 45° ELBOW TUBE END S.A.E. Straight Thread End



### A-350 • Male 45° Elbow

Part Numbers Include body nuts, sleeves, "O-Rings" and Back-Up Washers.

| Part no. | Tube O.D. | S.A.E. Male Thread | Overall Length |
|----------|-----------|--------------------|----------------|
| A350-4   | 1/4"      | 7/16"-20           | 1.03"          |
| A350-5   | 5/16"     | 1/2"-20            | 1.03"          |
| A350-6   | 3/8"      | 9/16"-18           | 1.09"          |
| A350-8   | 1/2"      | 3/4"-16            | 1.28"          |
| A350-10  | 5/8"      | 7/8"-14            | 1.50"          |
| A350-12  | 3/4"      | 1 1/16"-12         | 1.72"          |
| A350-14  | 7/8"      | 1 3/16"-12         | 1.78"          |
| A350-16  | 1"        | 1 5/16"-12         | 1.84"          |
| A350-20  | 1 1/4"    | 1 5/8"-12          | 1.88"          |
| A350-24  | 1 1/2"    | 1 7/8"-12          | 1.88"          |
| A350-32  | 2"        | 2 1/2"-12          | 1.88"          |

#### Stainless Steel Tubing

Lenz O-ring Seal tube fitting performs equally well on stainless steel tubing as with carbon steel tubing, but requires the use of stainless steel sleeves (#165-xxSS) and stainless steel buffer washers (#195-xx-SS), even when used with steel fittings. Example, when ordering: 100-12-12 with SS Sleeves.

When Ordering Lenz Fittings in all Stainless Steel Add SS To The Part Number. Example: 100-12-12-SS