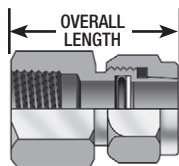


250 FEMALE CONNECTOR Tube End-Female Pipe End



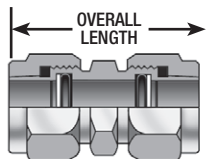
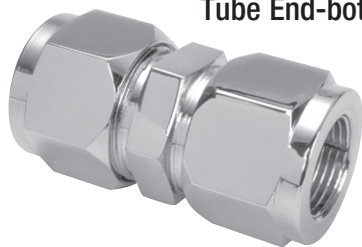
250 • Female Connector

Part Numbers Include body nuts, sleeves, "O-Rings" and Back-Up Washers.

Part No.	Tube O.D.	Female Pipe	Overall
250-4-2*	1/4"	1/8"	1.34"
250-4-4*	1/4"	1/4"	1.47"
250-5-2*	5/16"	1/8"	1.34"
250-5-4*	5/16"	1/4"	1.47"
250-6-4*	3/8"	1/4"	1.53"
250-6-2	3/8"	1/8"	1.21"
250-6-6*	3/8"	3/8"	1.65"
250-8-6*	1/2"	3/8"	1.87"
250-8-4	1/2"	1/4"	1.59"
250-8-8*	1/2"	1/2"	2.06"
250-10-8*	5/8"	1/2"	1.72"
250-10-4	5/8"	1/4"	1.72"
250-10-6	5/8"	3/8"	2.16"
250-12-12*	3/4"	3/4"	2.31"
250-12-8	3/4"	1/2"	2.06"
250-14-12*	7/8"	3/4"	2.31"
250-14-20*	7/8"	1 1/4"	2.69"
250-16-16*	1"	1"	2.72"
250-16-12	1"	3/4"	2.22"
250-16-24*	1"	1 1/2"	2.91"
250-18-16*	1 1/8"	1"	2.69"
250-20-20*	1 1/4"	1 1/4"	3.00"
250-24-24*	1 1/2"	1 1/2"	3.16"
250-24-20*	1 1/2"	1 1/4"	2.78"
250-32-32*	2"	2"	3.59"

* Fittings with tube diameter bored through **Tube diameter bored through, optional
Tubing may be pushed all the way through the male connectors marked with an asterisk*. This exclusive feature has many uses in hydraulic or air circuitry.

300 UNION Tube End-both Ends

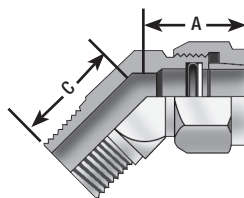
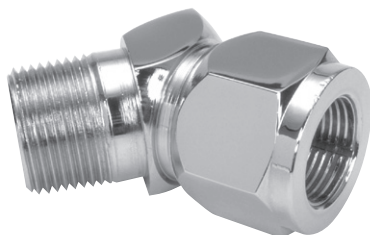


300 • Union

Part Numbers Include body nuts, sleeves, "O-Rings" and Back-Up Washers.

Part No.	Tube O.D.	Overall
300-2	1/8"	1.31"
300-4	1/4"	1.69"
300-5	5/16"	1.69"
300-6	3/8"	1.81"
300-8	1/2"	2.28"
300-10	5/8"	2.56"
300-12	3/4"	2.88"
300-14	7/8"	2.94"
300-16	1"	3.19"
300-20	1 1/4"	3.75"
300-24	1 1/2"	4.06"
300-32	2"	4.94"

350 MALE 45° ELBOW - TUBE END Male Pipe End



350 • Male 45° Elbow

Part Numbers Include body nuts, sleeves, "O-Rings" and Back-Up Washers.

Part No.	Tube O.D.	Male Pipe Thread	"A" (Tube Leg)	"C" (Male Pipe Leg)
350-4-2	1/4"	1/8"	.78"	.62"
350-5-2	5/16"	1/8"	.88"	.62"
350-6-4	3/8"	1/4"	1"	.84"
350-6-6	3/8"	3/8"	1"	.94"
350-8-4	1/2"	1/4"	1.22"	.94"
350-8-6	1/2"	3/8"	1.22"	.94"
350-8-8	1/2"	1/2"	1.47"	1.16"
350-10-8	5/8"	1/2"	1.47"	1.16"
350-12-12	3/4"	3/4"	1.62"	1.18"
350-12-8	3/4"	1/2"	1.62"	1.16"
350-14-12	7/8"	3/4"	1.56"	1.25"
350-16-16	1"	1"	1.81"	1.47"
350-16-12	1"	3/4"	1.81"	1.28"
350-20-20	1 1/4"	1 1/4"	2.22"	1.66"
350-24-24	1 1/2"	1 1/2"	2.41"	1.75"
350-32-32	2"	2"	2.94"	2.03"

Stainless Steel Tubing

Lenz O-ring Seal tube fitting performs equally well on stainless steel tubing as with carbon steel tubing, but requires the use of stainless steel sleeves (#165-xxSS) and stainless steel buffer washers (#195-xx-SS), even when used with steel fittings. Example, when ordering: 100-12-12 with SS Sleeves.
When Ordering Lenz Fittings in all Stainless Steel Add SS To The Part Number. Example: 100-12-12-SS