



Split Flange Halves

For SAE Flanged Head Connection

Inches - Black
Millimeters - Red

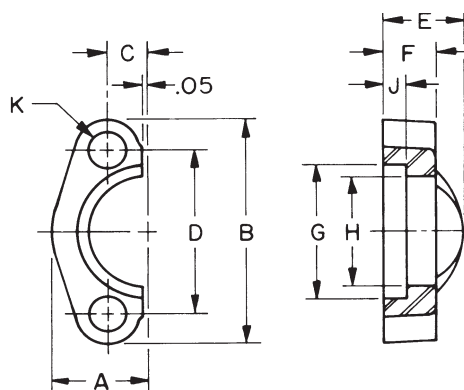


FIGURE 1

3000 PSI (SAE J518 Code 61)

| Flange Part Number Fig. 1 | Flange Size | A .03 | B .03 | C .01 | D .010 | E .03 | F .03 | G .010 | H .010 | J | K Dia. | * Bolt Part Number | * Lock Washer Part Number | Heck Bolt Torque Range (LB-IN) | Max Rec. Working Press (PSI) |
|---------------------------|-------------|--------------|---------------|----------------|-----------------|--------------|-------------|-----------------|-----------------|---------------|---------------|--------------------|---------------------------|--------------------------------|------------------------------|
| 8SF-2 | .50 | .86 21.8 | 2.12 53.8 | .344 8.74 | 1.500 38.10 | .75 19.0 | .50 12.7 | 1.219 30.96 | .955 24.26 | .245 6.22 | .344 8.74 | M522-1 | 5LW | 175-225 | 5000 |
| 12SF-2 | .75 | .98 24.9 | 2.56 65.0 | .438 11.13 | 1.875 47.63 | .88 22.4 | .56 14.2 | 1.531 38.89 | 1.265 32.13 | .245 6.22 | .406 10.31 | M522-2 | 6LW | 250-350 | 5000 |
| 16SF-2 | 1.00 | 1.11 28.2 | 2.75 69.8 | .515 13.08 | 2.062 52.37 | .94 23.9 | .62 15.7 | 1.781 45.24 | 1.515 38.48 | .295 7.49 | .406 10.31 | M522-2 | 6LW | 325-425 | 5000 |
| 20SF-2 | 1.25 | 1.39 35.3 | 3.12 79.2 | .594 15.09 | 2.312 58.72 | .88 22.4 | .56 14.2 | 2.031 51.59 | 1.720 43.69 | .295 7.49 | .469 11.91 | M522-3 | 7LW | 425-550 | 4000 |
| 24SF-2 | 1.50 | 1.58 40.1 | 3.69 93.7 | .703 17.86 | 2.750 69.85 | 1.00 25.4 | .62 15.7 | 2.406 61.11 | 2.000 50.80 | .297 7.54 | .531 13.49 | M522-4 | 8LW | 550-700 | 3000 |
| 32SF-2 | 2.00 | 1.86 47.2 | 4.00 101.6 | .844 21.44 | 3.062 77.77 | 1.03 26.2 | .62 15.7 | 2.844 72.24 | 2.470 62.74 | .355 9.02 | .531 13.49 | M522-4 | 8LW | 650-800 | 3000 |
| 40SF-2 | 2.50 | 2.09 53.1 | 4.50 114.3 | 1.000 25.40 | 3.500 88.90 | 1.50 38.1 | .75 19.1 | 3.344 84.94 | 2.950 74.93 | .355 9.02 | .531 13.49 | M522-5 | 8LW | 950-1100 | 2500 |
| 48SF-2 | 3.00 | 2.53 64.3 | 5.31 134.9 | 1.219 30.96 | 4.188 106.38 | 1.62 41.1 | .88 22.3 | 4.031 102.39 | 3.580 90.93 | .355 9.02 | .656 16.66 | M522-7 | 10LW | 1650-1800 | 2000 |
| 56SF-2 | 3.50 | 2.70 68.6 | 6.00 152.4 | 1.375 34.93 | 4.750 120.65 | 1.12 28.4 | .88 22.3 | 4.531 115.09 | 4.030 102.36 | .422 10.72 | .656 16.66 | M522-8 | 10LW | 1400-1600 | 500 |

See Page 44b for Kits

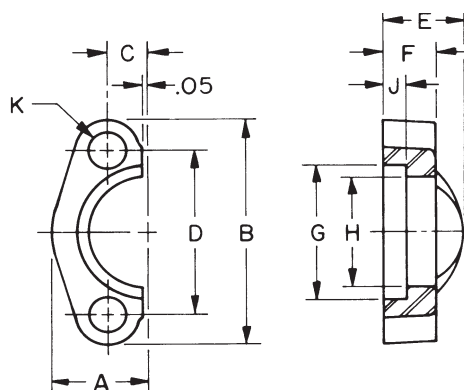


FIGURE 1

6000 PSI (SAE J518 Code 62)

| Flange Part Number Fig. 1 | Flange Size | A .03 | B .03 | C .01 | D .010 | E .03 | F .03 | G .010 | H .010 | J | K Dia. | * Bolt Part Number | * Lock Washer Part Number | Heck Bolt Torque Range (LB-IN) | Max Rec. Working Press (PSI) |
|---------------------------|-------------|--------------|--------------|---------------|----------------|--------------|--------------|----------------|----------------|---------------|---------------|--------------------|---------------------------|--------------------------------|------------------------------|
| 12SFX-2 | .75 | 1.14 19.0 | 2.81 29.0 | .469 11.91 | 2.000 50.80 | 1.12 28.4 | .75 19.0 | 1.656 42.06 | 1.280 32.51 | .325 8.26 | .406 10.31 | M522-1 | 6LW | 300-400 | 6000 |
| 16SFX-2 | 1.00 | 1.33 25.4 | 3.19 33.8 | .547 13.89 | 2.250 57.15 | 1.31 33.3 | .94 23.9 | 1.906 48.41 | 1.530 38.86 | .355 9.02 | .469 11.91 | M522-13 | 7LW | 500-600 | 6000 |
| 20SFX-2 | 1.25 | 1.48 31.8 | 3.75 37.6 | .625 15.88 | 2.625 66.68 | 1.50 38.1 | 1.06 26.9 | 2.156 54.76 | 1.750 44.45 | .385 9.78 | .531 13.49 | M522-5 | 8LW | 750-900 | 6000 |
| 24SFX-2 | 1.50 | 1.83 38.1 | 4.44 46.5 | .719 18.26 | 3.125 79.38 | 1.69 42.9 | 1.19 30.2 | 2.531 64.29 | 2.030 51.56 | .475 12.07 | .656 16.66 | M522-9 | 10LW | 1400-1600 | 6000 |
| 32SFX-2 | 2.00 | 2.20 50.8 | 5.25 55.9 | .875 22.23 | 3.812 96.82 | 2.06 52.3 | 1.44 36.6 | 3.156 80.16 | 2.660 67.56 | .475 12.07 | .781 19.84 | M522-26 | 12LW | 2400-2600 | 6000 |

*These parts are not supplied under fitting Catalog Number. Must be ordered separately.
To order two split flange halves plus hardware, drop the -2 after the SF or SFX.

See page 44b for kits