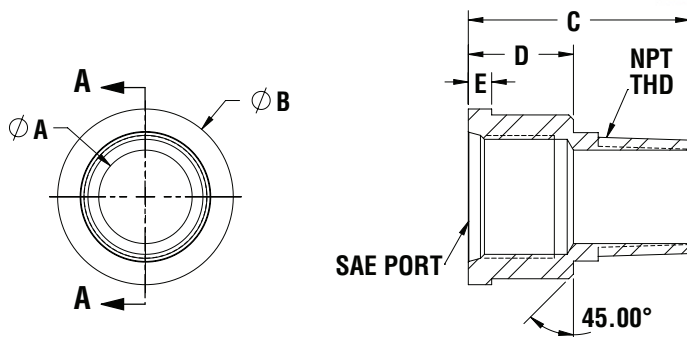




AN-WM Weld Coupling

SAE to NPT

- AISI 1018 Mild Steel
- Zinc Black Phosphate Finish
- Ideal for installing 49 series sump strainers and diffusers with female ports.

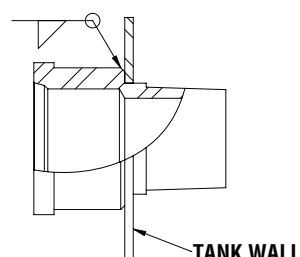
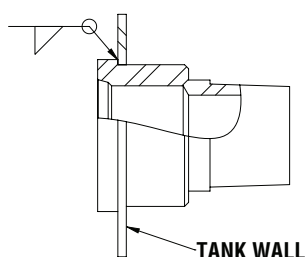


Dimensional Details

Part No.	Port Size	Port Thread	NPT Thread		A	B	C	D	E
AN-WM-12-12	-12	1-1/16-12 UN 2B	3/4"	in mm	0.83 21.08	1.63 41.4	2.13 54.1	1.13 28.7	0.25 6.35
AN-WM-14-14	-14	1-3/16-12 UN 2B	3/4"	in mm	0.83 21.08	1.75 44.45	2.13 54.1	1.13 28.7	0.25 6.35
AN-WM-16-16	-16	1-5/16-12 UN 2B	1"	in mm	1.00 25.4	1.88 47.75	2.38 60.45	1.13 28.7	0.25 6.35
AN-WM-20-20	-20	1-5/8-12 UN 2B	1 1/4"	in mm	1.38 35.05	2.25 57.15	2.38 60.45	1.12 28.45	0.36 9.14
AN-WM-24-24	-24	1-7/8-12 UN 2B	1 1/2"	in mm	1.81 46.0	2.50 63.5	2.50 63.5	1.25 31.75	0.36 9.14
AN-WM-32-32	-32	2-1/2-12 UN 2B	2"	in mm	2.00 50.8	3.00 76.2	2.50 63.5	1.21 30.73	0.36 9.14

LOW PROFILE MOUNTING

STANDARD MOUNTING



Hole Size Requirements

Part No.		Standard Mount Height Hole Diameter	Tolerance	Low Profile Mount Hole Diameter	Tolerance
AN-WM-12-12	in mm	1.130 28.7	+0.030 / -0.000 +0.762 / -0.000	1.500 38.1	+0.030 / -0.000 +0.762 / -0.000
AN-WM-14-14	in mm	1.130 28.7	+0.030 / -0.000 +0.762 / -0.000	1.625 41.3	+0.030 / -0.000 +0.762 / -0.000
AN-WM-16-16	in mm	1.380 35.05	+0.045 / -0.000 +1.143 / -0.000	1.750 44.45	+0.030 / -0.000 +0.762 / -0.000
AN-WM-20-20	in mm	1.880 47.75	+0.045 / -0.000 +1.143 / -0.000	2.125 54.0	+0.030 / -0.000 +0.762 / -0.000
AN-WM-24-24	in mm	2.000 50.8	+0.080 / -0.000 +2.032 / -0.000	2.375 60.32	+0.030 / -0.000 +0.762 / -0.000
AN-WM-32-32	in mm	2.380 60.45	+0.080 / -0.000 +2.032 / -0.000	2.875 73.0	+0.030 / -0.000 +0.762 / -0.000

See Technical Bulletin TB.FIL24.1212, or further information at
(Technical Data – www.lenzinc.com)