



## AN-WB Weld Couplings

### Model AN-WB

- Machined 1018 steel, phosphate finish
- 304 stainless steel
- -6 to -32 female SAE threads
- 3/8" to 2" NPT threads

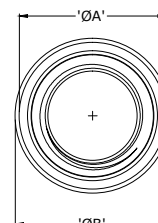
### Options

- Aluminum adapters (250 minimum qty.)

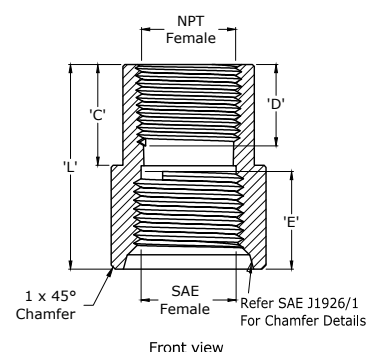


## Dimensional Details

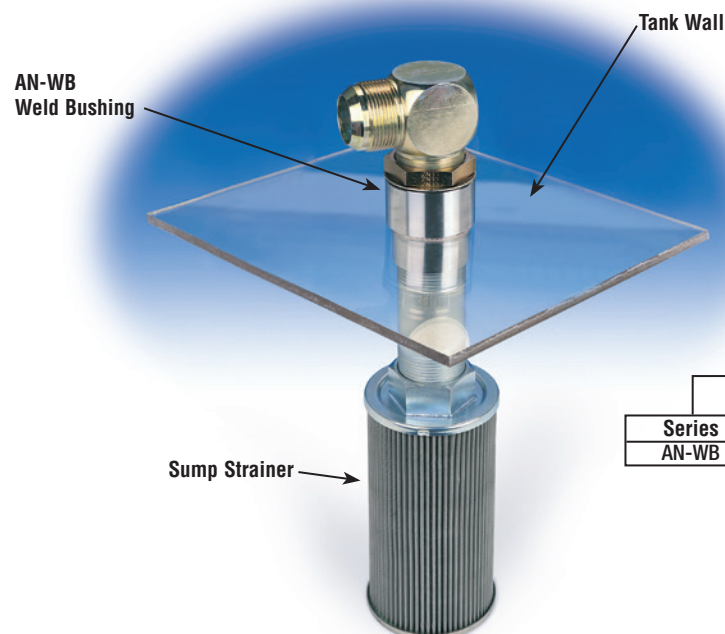
| Model Number | Female SAE | Female NPT |    | A     | B     | C     | D     | E     | L     |
|--------------|------------|------------|----|-------|-------|-------|-------|-------|-------|
| AN-WB-6-6    | 9/16"-18   | 3/8"       | IN | 0.81  | 0.70  | 0.67  | 0.59  | 0.51  | 1.41  |
|              |            |            | MM | 20.50 | 17.90 | 17.00 | 15.00 | 13.00 | 35.80 |
| AN-WB-8-8    | 3/4"-16    | 1/2"       | IN | 1.00  | 1.12  | 0.91  | 0.71  | 0.75  | 1.74  |
|              |            |            | MM | 25.30 | 28.57 | 23.00 | 18.00 | 19.00 | 44.30 |
| AN-WB-10-12  | 7/8"-14    | 3/4"       | IN | 1.27  | 1.38  | 0.94  | 0.75  | 0.79  | 1.89  |
|              |            |            | MM | 32.30 | 35.05 | 24.00 | 19.00 | 20.00 | 48.00 |
| AN-WB-12-12  | 1 1/16"-12 | 3/4"       | IN | 1.27  | 1.50  | 0.97  | 0.75  | 0.87  | 1.98  |
|              |            |            | MM | 32.30 | 38.10 | 24.70 | 19.00 | 22.00 | 50.30 |
| AN-WB-14-16  | 1 3/16"-12 | 1"         | IN | 1.50  | 1.63  | 1.09  | 0.75  | 0.75  | 2.05  |
|              |            |            | MM | 38.00 | 41.40 | 27.60 | 19.00 | 19.00 | 52.00 |
| AN-WB-16-16  | 1 5/16"-12 | 1"         | IN | 1.50  | 1.75  | 1.09  | 0.75  | 0.75  | 2.17  |
|              |            |            | MM | 38.00 | 44.45 | 27.60 | 19.00 | 19.00 | 55.10 |
| AN-WB-20-20  | 1 5/8"-12  | 1 1/4"     | IN | 1.87  | 2.13  | 1.13  | 0.83  | 0.75  | 2.25  |
|              |            |            | MM | 47.60 | 54.00 | 28.60 | 21.00 | 19.00 | 57.15 |
| AN-WB-24-24  | 1 7/8"-12  | 1 1/2"     | IN | 2.13  | 2.37  | 1.13  | 1.06  | 0.83  | 2.26  |
|              |            |            | MM | 54.00 | 60.30 | 28.60 | 27.00 | 21.00 | 57.40 |
| AN-WB-32-32  | 2 1/2"-12  | 2"         | IN | 3.00  | 3.25  | 1.25  | 0.94  | 0.83  | 2.41  |
|              |            |            | MM | 76.20 | 82.55 | 31.80 | 24.00 | 21.00 | 61.20 |



Top view



Front view



## Ordering Code AN-WB

AN-WB — 12 — 12 — SS

| Series | Female SAE    | Female Pipe   | Material                          |                     |
|--------|---------------|---------------|-----------------------------------|---------------------|
| AN-WB  | 6 9/16"-18    | 6 3/8" NPT    | Omit                              | Steel               |
|        | 8 3/4"-16     | 8 1/2" NPT    | SS                                | 304 Stainless Steel |
|        | 10 7/8"-14    | 12 3/4" NPT   | *ALUM                             | Aluminum            |
|        | 12 1 1/16"-12 | 16 1" NPT     | *Consult factory for availability |                     |
|        | 14 1 3/16"-12 | 20 1 1/4" NPT |                                   |                     |
|        | 16 1 5/16"-12 | 24 1 3/4" NPT |                                   |                     |
|        | 20 1 5/8"-12  | 32 2" NPT     |                                   |                     |
|        | 24 1 7/8"-12  |               |                                   |                     |
|        | 32 2 1/2"-12  |               |                                   |                     |

See Technical Bulletin TB.FIL24.1212, TB.TA01.708 TB.TA02.708  
or further information at (Technical Data – [www.lenzinc.com](http://www.lenzinc.com))