



LWBA Weld Adapters

Model LWB, LWBA

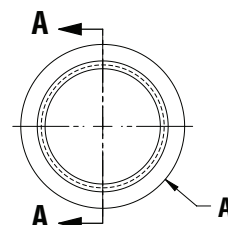
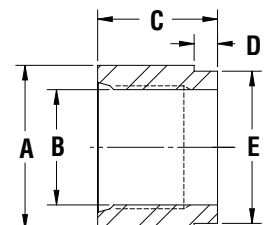
- Machined 1018 Steel, phosphate finish
- 304 Stainless Steel
- -6 to -32 SAE threads
- 3/8" to 1" NPT threads

Options

- Aluminum adapters (limited sizes)

Dimensional Details

S.A.E. Model Number	Female S.A.E.	N.P.T. Model Number	Female NPT					
	B		B		A	C	D	E
LWBA-4	7/16"-20			in	0.85	0.75	0.25	0.73
				mm	21.50	19.05	6.35	18.50
LWBA-5	1/2"-20			in	0.91	0.75	0.25	0.79
				mm	23.10	19.05	6.35	20.10
LWBA-6	9/16"-18	LWB-6N	3/8"	in	1.00	0.75	0.25	0.88
				mm	25.40	19.05	6.35	22.35
LWBA-8	3/4"-16	LWB-8N	1/2"	in	1.25	0.81	0.25	1.13
				mm	31.75	20.55	6.35	28.70
LWBA-10	7/8"-14			in	1.38	0.81	0.25	1.25
				mm	35.00	20.55	6.35	31.75
LWBA-12	1 1/16"-12	LWB-12N	3/4"	in	1.50	1.03	0.25	1.38
				mm	38.10	26.15	6.35	35.00
LWBA-14	1 3/16"-12			in	1.63	1.00	0.25	1.50
				mm	41.40	25.40	6.35	38.10
LWBA-16	1 5/16"-12	LWB-16N	1"	in	1.75	1.03	0.25	1.63
				mm	44.45	26.15	6.35	41.40
LWBA-20	1 5/8"-12			in	2.25	1.03	0.25	2.13
				mm	57.15	26.15	6.35	54.10
LWBA-24	1 7/8"-12			in	2.75	1.03	0.25	2.50
				mm	69.85	26.16	6.35	63.50
LWBA-32	2 1/2"-12			in	3.25	1.25	0.25	3.00
				mm	82.55	31.75	6.35	76.20



Ordering Code LWBA

LWBA — 12 — * — SS

Series	Port Size- Port Thread	Thread Type	Material
LWBA — SAE	4 7/16"-20	SAE Omit	Omit Steel
LWB — NPT	5 1/2"-20	N NPT	*SS 304 Stainless Steel
	*6 9/16"-18 or 3/8" NPT		*ALUM Aluminum
	*8 3/4"-16 or 1/2" NPT		
	*12 1 1/16"-12 or 3/4" NPT		
	*16 1 5/16"-12 or 1" NPT		
	20 1 5/8"-12 or 1 1/4" NPT		
	24 1 7/8"-12 or 1 3/4" NPT		
	32 2 1/2"-12 or 2" NPT		

*Available NPT models

*Consult factory for availability