



WF, BSPP Weld Flanges

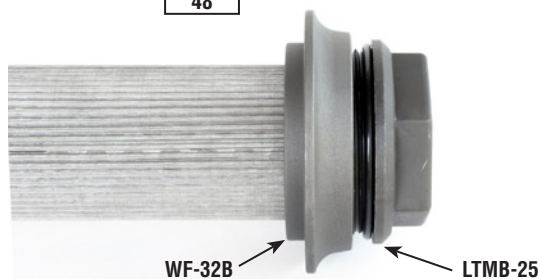
- Forged steel construction (AISI 1018-AISI 1020)
- Zinc Black Phosphate finish makes them suitable for welding
- Flanged pilot design makes for easy installation
- 3/8" -3" BSPP threads available

Dimensional Details

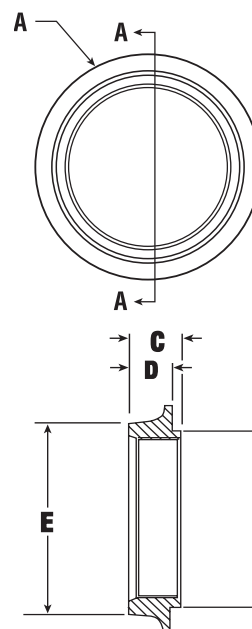
BSPP Model	BSPP Port		A	B	C	D	E
WF-6-B	3/8	in	1.5	0.93	0.56	0.31	1
		mm	38.10	23.62	14.22	7.87	25.40
WF-8-B	1/2	in	2.13	1.38	0.69	0.44	1.44
		mm	54.10	35.05	17.53	11.18	36.58
WF-12-B	3/4	in	2.13	1.38	0.69	0.44	1.44
		mm	54.10	35.05	17.53	11.18	36.58
WF-16-B	1	in	2.38	1.66	0.75	0.5	1.75
		mm	60.45	42.16	19.05	12.70	44.45
WF-20-B	1 1/4	in	2.69	2	0.75	0.5	2.13
		mm	68.33	50.80	19.05	12.70	54.10
WF-24-B	1 1/2	in	3	2.25	0.75	0.5	2.38
		mm	76.20	57.15	19.05	12.70	60.45
WF-32-B	2	in	3.5	2.63	0.86	0.6	2.88
		mm	88.90	66.80	21.84	15.24	73.15
WF-40-B		in	4.63	3.66	1	0.81	3.94
		mm	117.60	92.96	25.4	20.57	100.08
WF-48-B	3	in	4.63	3.66	1	0.81	3.94
		mm	117.60	92.96	25.4	20.57	100.08

Ordering Code BSPP Flanges

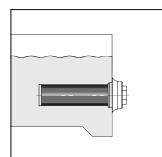
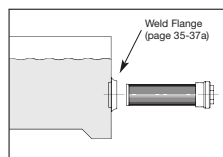
WF — 8 — B			
Series	Port	Thread	Material
WF	BSPP	B	BSPP
	6		Omit
	8		Steel
	12		
	16		
	20		
	24		
	32		
	40		
	48		



Steel



The "rule of thumb" we use is +.020 for punched holes and +.040 for water jet-laser cut holes. Some holes may actually deviate from this recommendation if the tolerance is close enough to a standard punch you may have in your tool room.



Mounting Details: Mount through sidewall or through tank top and into standpipe.