



Medium Pressure In Line Filters Cartridge Type

Suction or Return Line Application Model DH & DHA (NPT & SAE Ports)

Specifications

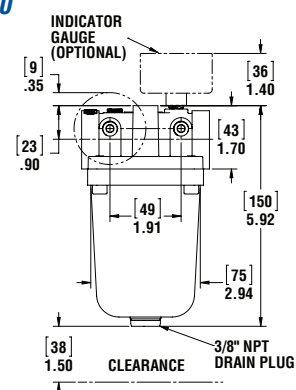
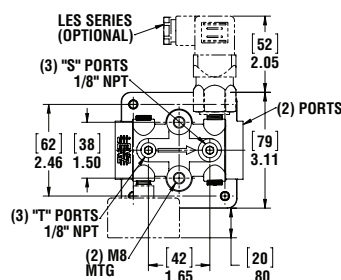
- Working pressure 350 P.S.I. (24 Bar) 80 PSI ΔP w/o bypass
- Operating Temperatures -22° F to +212° F (-32° C to +100° C)
- Flows to 75 GPM (280 LPM) Return
- 1/2", 3/4", 1", 1 1/4", 1 1/2" Ports
- Cellulose and wire mesh elements
- Aluminum casting
- Buna Seals
- Compatible with mineral oils HH, HL, HM,HR,HV, HG, synthetic fluids A and M series types HS, HFDR, HFDS, HFDU and water based emulsions HFAE, HFAS according to ISO 6743/4
- Aluminum bowl with SAE drain plug
- 2.5 (lbs) 1.1 (kg), 5.5lbs, (2.5 kgs) shipping weight

Options

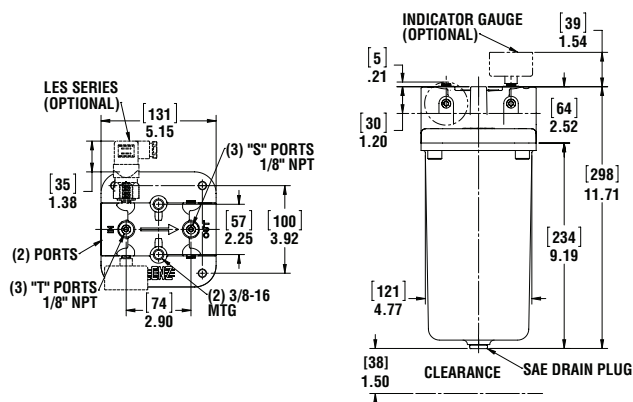
- NPT or SAE Ports
- 10, 25, micron cellulose, synthetic elements
- 60, 100, 200 wire mesh
- Visual or electrical indicators
- 5, 15, 25 P.S.I.D., blocked bypass options for return or suction
- Optional Viton, EPR seals
- Viton Seals required for synthetic fluid



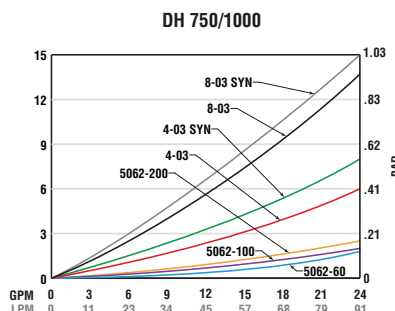
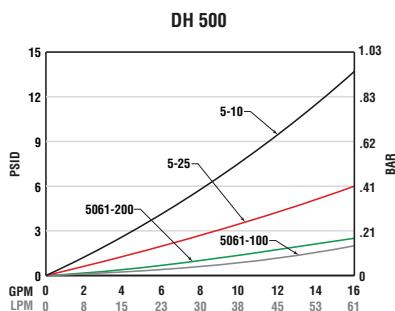
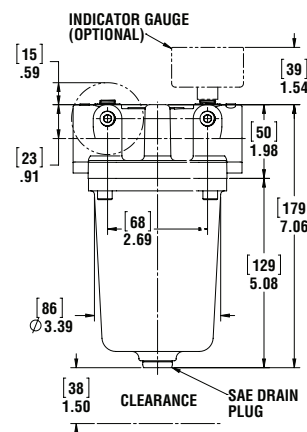
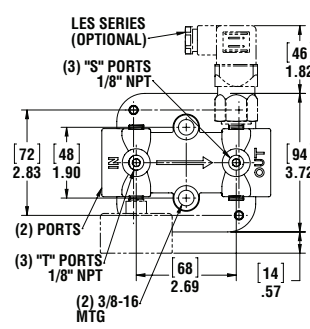
DH-500



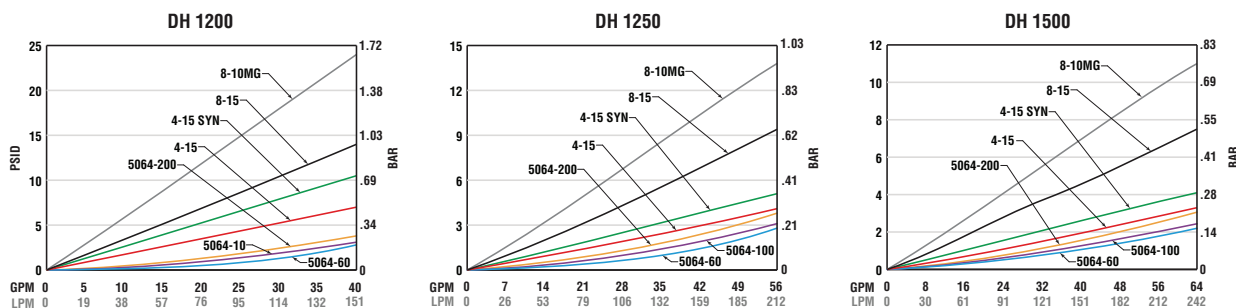
DH-1200, DH-1250, DH-1500



DH-750, DH-1000



See Technical Bulletin TB.FIL03.708, TB.FIL9.708, TB.FIL11.708, TB.FIL13.708, TB.FIL18.708, for further information at (Technical Data – www.lenzinc.com)



Temperature 100° F Viscosity 150 SUS
Average pressure drop through clean assembly

Assembly Ordering Code

DH — 750 — 800 — PR — V — T

SERIES		PORT		MEDIA		BYPASS		IND. PORTS	
DH	NPT	500	1/2"	800	10 MICRON CELLULOSE	RR	RETURN 25 P.S.I.	OMIT	NONE
DHA	SAE	750	3/4"	400	25 MICRON CELLULOSE	PR	RETURN 15 P.S.I.	T	1/8 NPT RETURN
		1000	1"	*500	25 MICRON SYNTHETIC	VR	SUCTION 5 P.S.I.	S	1/8 NPT SUCTION
		1200	1"	*300	10 MICRON SYNTHETIC	OMIT No Bypass		T, S	ALL PORTS
		1250	1 1/4"	60	60 S.S. WIRE MESH				
		1500	1 1/2"	100	100 S.S. WIRE MESH				
				200	200 S.S. WIRE MESH				
				700	700 S.S. WIRE MESH				

SEALS	
OMIT	BUNA
V	VITON
EPR	ETHYLENE PROPYLENE

* Only Available in DH-750, DH-1000, DH-1200, 1250, 1500
Buna seals standard.

For indicator gauge specifications and ordering information see pages 34a-35a

**Indicators ordered and shipped separately*



Replacement Elements

MODEL	SERIES	MEDIA	IM ²	CM ²	RATING B(X)=2/20/75	DIRT HOLDING CAPACITY
5-10	DH-500	10 MICRON CELLULOSE	143	920	10μ/25μ/32μ	4
5-25	DH-500	25 MICRON CELLULOSE	143	920	43μ/46μ/54μ	5.7
8-03	DH-750, 1000	10 MICRON CELLULOSE	342	2206	10μ/25μ/32μ	10
8-03 SYN	DH-750, 1000	10 MICRON SYNTHETIC	102	655	4μ/10μ/12μ	6
4-03	DH-750, 1000	25 MICRON CELLULOSE	342	2206	43μ/46μ/54μ	14
4-03 SYN	DH-750, 1000	25 MICRON SYNTHETIC	102	655	7μ/16μ/23μ	7
8-15	DH-1200, 1250, 1500	10 MICRON CELLULOSE	1122	7237	10μ/25μ/32μ	34
8-10MG	DH-1200, 1250, 1500	10 MICRON SYNTHETIC	798	5150	3μ/10μ/12μ	47
4-15	DH-1200, 1250, 1500	25 MICRON CELLULOSE	1122	7237	43μ/46μ/54μ	45
4-15 SYN	DH-1200, 1250, 1500	25 MICRON SYNTHETIC	798	5150	7μ/16μ/23μ	55
5061-100	DH-500	100 SS WIRE MESH	55	360	141μ	N/A
5061-200	DH-500	200 SS WIRE MESH	55	360	74μ	N/A
5062-200	DH-750, 1000	200 S.S. WIRE MESH	120	774	74μ	N/A
5062-100	DH-750, 1000	100 S.S. WIRE MESH	120	774	140μ	N/A
5062-700	DH-750, 1000	700 S.S. WIRE MESH	87	560	25μ	N/A
5062-60	DH-750, 1000	60 S.S. WIRE MESH	120	774	262μ	N/A
5064-200	DH-1200, 1250, 1500	200 S.S. WIRE MESH	325	2096	74μ	N/A
5064-60	DH-1200, 1250, 1500	60 S.S. WIRE MESH	325	2096	262μ	N/A
5064-100	DH-1200, 1250, 1500	100 S.S. WIRE MESH	325	2096	144μ	N/A
5064-700	DH-1200, 1250, 1500	700 S.S. WIRE MESH	279	1800	25μ	N/A

Consult factory for other medias, and high collapse medias, element lengths

Beta Rating of 2 = 50% Efficiency
Beta Rating of 20 = 95% Efficiency
Beta Rating of 75 = 98.7% Efficiency
Note: 45 P.S.I. Pressure Drop Maximum
Without Bypass Valve In Filter Head



2" Diameter Filter Indicating Gauges



MC-12

Return Line Indicating Gauge
for 15 P.S.I. Filter Applications
2" Multi color

0-12 P.S.I. Green
12-15 P.S.I. Yellow
15-60 P.S.I. Red (Service Filter)
(To be used with "T" Indicator Port Location)



MC-20

Return Line Indicating Gauge
for 25 P.S.I. Filter Applications
2" Multi color

0-20 P.S.I. Green
21-24 P.S.I. Yellow
25-60 P.S.I. Red (Service Filter)
(To be used with "T" Indicator Port Location)



CHANGE FILTER

CP-2

Compound Indicating Gauge
(Suction or Return Line)

10" to 30" Vacuum is a Red Danger Area.
0-60 PSI
A Red "Change Filter" Sticker for the Pressure side is included with each gauge for application after the pressure factor is determined.
(To be used with "T" or "S" Indicator Port Location)



GLY-MC-20

Glycerin Filled
Return Line Indicating Gauge
for 25 P.S.I. Filter Applications
2" Multi color

0-20 P.S.I. Green
21-24 P.S.I. Yellow
25-60 P.S.I. Red (Service Filter)
(To be used with "T" Indicator Port Location)



135080

Suction Line Indicating Gauge for
5 P.S.I. vacuum filter application
2" Multi color

0-9" HG Green
9-11" HG Yellow
11-30" HG Red (Service Filter)
(To be used with "S" Indicator Port Location)



VAC-3-20

Suction Line Indicating Gauge
for 3 P.S.I. vacuum filter applications
2" Multi color

0-3" HG Green
4-6" HG Yellow
6-30" HG Red (Service Filter)
(To be used with "S" Indicator Port Location)



Differential Indicator DP-75

Simple differential sliding
indicator which changes from
green to red at 7 P.S.I.D.

0 - 7 P.S.I.D. Green Clean
7 - 10 P.S.I.D. Red Service Filter
CP Series (500, 750, 1010, 1280, 1580)

**Indicators ordered and shipped separately*



Electrical Filter Indicators

Field Adjustable

Specifications:

- 1/8 NPT connection
- 3 AMP 12/24 VDC, 125/250 VAC IP67
- +/- 2% repeatability of full set point range @ 70° F
- Operating temperature 40°F to +250°F (-40°C to 121°C)
- 1,000,000 cycles mechanical range
- Maximum pressure 500 (25 BAR) PSI
- Steel housing, zinc plated
- Buna N diaphragm
- SPDT snap action switch

Options:

- EPDM seals -10°F – 250°F (-23°C – 121°C)
- Viton seals 0 – 250°F (-18°C – 121°C)
- Flying leads

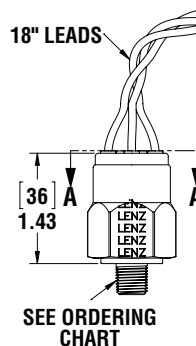
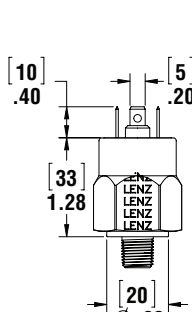
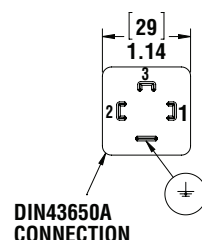
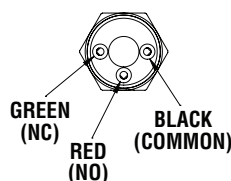
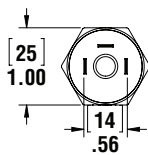


LES-FL

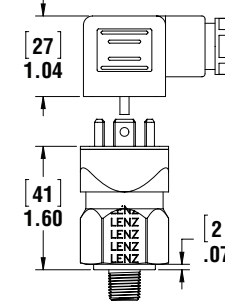


LES-HC

MODEL	ADJUSTMENT RANGE	AVERAGE DIFFERENTIAL	SET PRESSURE
P1	3-20 PSI (.2-1.4 BAR)	2-5 PSI (.13-0.4 BAR)	15 PSI
P2	15-80 PSI (1.03-6 BAR)	4-7 PSI (.27-0.5 BAR)	22 PSI
V1	5-28 IN Hg (160-948mb)	2-4 INHg (67-135mb)	5 Hg



LES-FL



LES-HC

Switch Ordering Code

LES — P1 — 2N — B — HC —

SERIES	ADJUSTMENT RANGE	THREAD	SEALS	ELECTRICAL CONNECTION	OPTIONS
LES	P1 3-20 PSI P2 15-80 PSI V1 5-30" HG RISING	2N 1/8" NPT 4N 1/4" NPT 4S 7/16"-20 6S 9/16"-18	B Buna V Viton E EPDM	FL FLYING LEADS HC DIN CLAMP	OMIT SS STAINLESS HOUSING IL IND LIGHT

*Indicators ordered and shipped separately

Switch can be used in AC or DC Service.

For other options consult factory.

Switch does not indicate differential pressure

See Technical Bulletin TB.FIL23.912, or further information at
(Technical Data – www.lenzinc.com)