



## Canister Filters/Disposable Type

Suction or Return Line Application  
Model Series CP-500, 750, 1010

### Specifications

- Working pressure 200 PSI (14 Bar) 80 PSI  $\Delta P$  w/o bypass
- Operating Temperatures -22°F to +212° F (-32°C to +100°C)
- Flows to 25 GPM (96 LPM) Return
- Flows to 5 GPM (19 LPM) Suction
- 1/2", 3/4", 1" Ports
- Aluminum Casting — Die Cast
- Buna Seals
- Compatible with mineral oils HH, HL, HM, HR, HV, HG, according to ISO 6743/4
- Element post threads 1"-12 UNF
- 2.2 (lbs.), 1 (kgs.) shipping weight

### Options

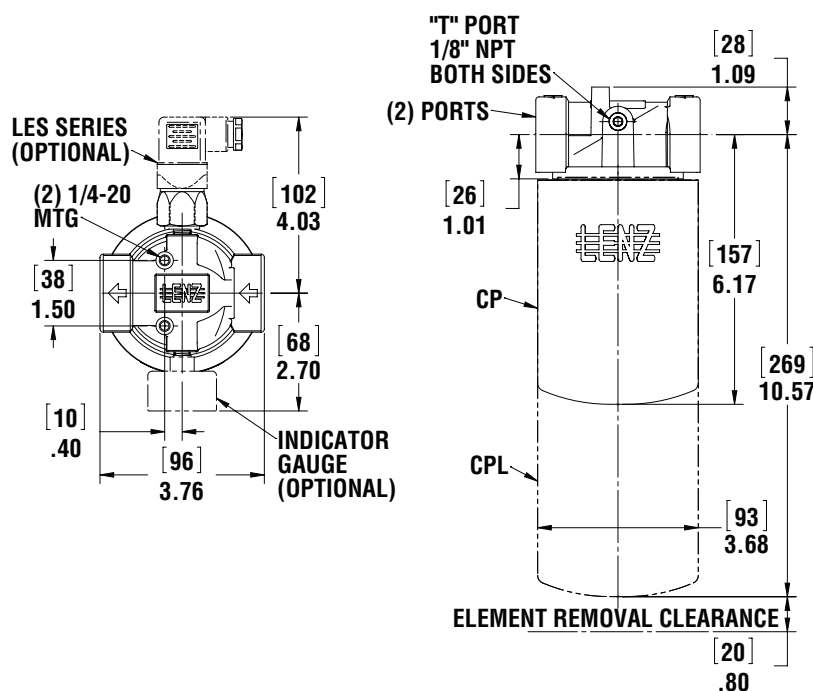
- NPT or SAE Ports (CP-500, 750, 1010)
- 3, 6, 10, 25, micron cellulose, synthetic elements
- Water absorbing elements -10 micron
- 100 wire mesh element
- Visual or electrical indicators
- 2.5, 5, 15, 25, blocked bypass options for suction or return



CP-500, CP-750,  
CP-1010 Series



CP-752



CP-501  
CP-751  
CP-1011

## Filter Head Ordering Code

CP — 751 — R — T

Series	Filter Head	Port Size
CP NPT	501	1/2"
CPA SAE	751	3/4"
	1011	1"

Series	Filter Head	Port Size
CP NPT	501	1/2"
CPA SAE	751	3/4"
	1011	1"

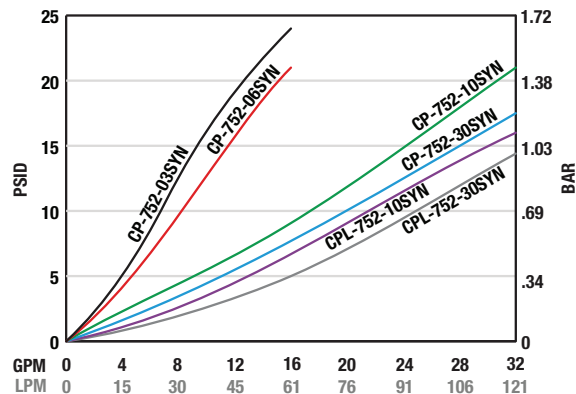
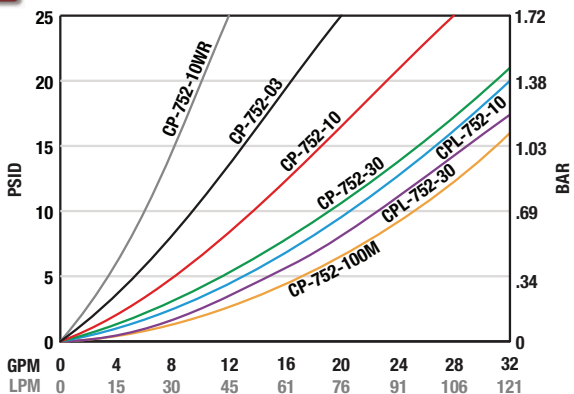
Bypass
P (15 PSI)
H (2.5 PSI)
R (25 PSI)
V (5 PSI)
B (None)

Ind. Ports
Omit None
T 1/8 NPT Return
S 1/8 NPT Suction

Indicating Gauges
Omit
(T) MC-12
(T) MC-20
(T,S) CP-2
(T) GLY-MC-20
(S) 135080
(S) VAC-3-20
DP-75
(T) LES-P1
(T) LES-P2
(S) LES-V1

CPA not available on CP-755 head  
\* Indicators ordered and shipped separately

See Technical Bulletin TB.FIL04.708, TB.FIL09.708, TB.FIL11.708, TB.FIL13.708, TB.FIL16.708, for further information at (Technical Data – [www.lenzinc.com](http://www.lenzinc.com))



Temperature 100°F Viscosity 150 SUS  
Average pressure drop through clean assembly

## Assembly Ordering Code

CP — \* — 750 — 10 — P — T

Series		Element Length		Model	Media		Length		Bypass		Ind. Ports	
CP	NPT	*Omit	Std.	500	3	3 Micron	Std.	Ext.	P (15 PSI)	Omit	None	
CPA	SAE	L	Extd.	750	10	10 Micron	X	X	H (2.5 PSI)	T	1/8 NPT	Return
				1010	30	25 Micron	X	X	R (25 PSI)	S	1/8 NPT	Suction
					3SYN	3 Micron	X		V (5 PSI)			
					6SYN	6 Micron	X		B (None)			
					10SYN	10 Micron	X	X				
					30 SYN	25 Micron	X	X				
					10WR	10 Micron	X					
					100	140 Micron	X					

For indicator gauge specifications and  
ordering information see pages 38a-39a

*\*Indicators ordered and shipped separately*



## Replacement Elements

Model Number	Media Type Micron	in <sup>2</sup> Area	cm <sup>2</sup> Area	Element Thread	Rating B(X)=2/20/75	Dirt Holding Capacity (Grams)
CP-752-03	3 Micron Cellulose	390	2516	1"-12 UNF	2/5μ	19
CP-752-10	10 Micron Cellulose	550	3548	1"-12 UNF	9/22/24μ	14
CP-752-30	25 Micron Cellulose	550	3548	1"-12 UNF	29/46/54μ	20
CPL-752-10	10 Cellulose	940	6064	1"-12 UNF	9/22/24μ	22
CPL-752-30	25 Cellulose	940	6064	1"-12 UNF	29/46/54μ	31
CP-752-03SYN	3 Micron Synthetic	366	2361	1"-12 UNF	2/3/4μ	19
CP-752-06SYN	6 Micron Synthetic	366	2361	1"-12 UNF	5/6/8μ	22
CP-752-10SYN	10 Micron Synthetic	366	2361	1"-12 UNF	4/10/12μ	11
CP-752-30SYN	25 Micron Synthetic	366	2361	1"-12 UNF	8/25/30μ	26
CPL-752-10SYN	10 Micron Synthetic	562	3625	1"-12 UNF	4/10/12μ	33
CPL-752-30SYN	25 Micron Synthetic	562	3625	1"-12 UNF	8/25/30μ	34
CP-752-10WR	10 Micron Water Absorption	175	1129	1"-12 UNF	10μ/18μ	5.5 ounces
CP-752-100M	100 Ss Wire Mesh	95	613	1"-12 UNF	N/A	N/A

Beta Rating Of 2 = 50 % Efficiency  
Beta Rating Of 20 = 95 % Efficiency  
Beta Rating Of 75 = 98.7 % Efficiency

Note: 80 PSI Pressure Drop  
Maximum Without Bypass Valve  
In Filter Head



## General Filter Specifications

### Bypasses

Differential opening set value + - 10%

### Medias

<b>Cellulose</b>	Resin impregnated paper
<b>Synthetic</b>	Inorganic micro fiber
<b>Wire Mesh</b>	140 micron, 100 mesh stainless Steel
<b>Water Removal</b>	10 micron resin impregnated paper

### Compatibility of Fluids with

#### Filter Heads & Bowls Per ISO 6743/4

**Mineral oils** (types HH, HL, HM, HR, HV)  
**Water based emulsions** (types HFAE, HFAS)  
**Synthetic fluids** (types HS, HFDR, HFDS, HFFU)  
**Water glycol** (types HFC)



LIT-1252-Bypass



LIT-1252-10P



CP-752-10

### Compatibility of Fluids with Filter Elements Per ISO 2943

**Mineral oils** (types HH, HL, HM, HR, HV, HG) ISO 6743/4  
**Synthetic fluids** (types A & M series only)  
**Water based emulsions** consult Lenz for further information

## Compatibility of Fluids with Seals Per ISO 6743/4

### Nitrile (Buna N)

**Mineral Oils** (HH, HL, HM, HR, HV, HG)  
**Water emulsion** (HFAE, HFAS)  
**Water glycol** (HFC)

### Viton seals

**Synthetic fluids** (types HS, HFDR, HFDS, HFDU)

### Indicator Options

<b>Visual</b>	Suction & return visual gauges
<b>Electrical</b>	Suction & return electrical switches
<b>Differential</b>	Return indicators

### Mineral Oil Types

<b>HH</b>	Non inhibited refined mineral oils
<b>HL</b>	Refined mineral oils with anti-oxidation and anti-rust properties
<b>HM</b>	HL fluids with improved anti wear
<b>HR</b>	HL oils with VI improvers
<b>HV</b>	Lubricants with high viscosity
<b>HG</b>	HM oils with anti-stick slip properties

### Water Based Emulsion Types

<b>HFAE</b>	Oil water emulsions or aqueous fluids which are further with additional letters
<b>HFAS</b>	Solutions of chemicals containing minimum 80% of water
<b>HFC</b>	Aqueous solutions with viscosity-increasing additives and minimum 35% mass water

### Synthetic Fluid Types

<b>HFDU</b>	Fire resistant fluids of other compositions
<b>HFDS</b>	HFD based upon phosphoric acid ester
<b>HS</b>	Synthetic fluids with no specific fire resistant properties
<b>HFDR</b>	HFD based on halogen-containing compounds





## 2" Diameter Filter Indicating Gauges



### MC-12

Return Line Indicating Gauge  
for 15 PSI Filter Applications  
2" Multi color

0-12 PSI Green  
12-15 PSI Yellow  
15-60 PSI Red (Service Filter)  
(To be used with "T" Indicator Port Location)



### MC-20

Return Line Indicating Gauge  
for 25 PSI Filter Applications  
2" Multi color

0-20 PSI Green  
21-24 PSI Yellow  
25-60 PSI Red (Service Filter)  
(To be used with "T" Indicator Port Location)



CHANGE FILTER

### CP-2

Compound Indicating Gauge  
(Suction or Return Line)

10" to 30" Vacuum is a Red Danger Area.  
0-60 PSI  
A Red "Change Filter" Sticker for the  
Pressure side is included with each gauge  
for application after the pressure factor  
is determined.  
(To be used with "T" or "S" Indicator Port Location)



### GLY-MC-20

Glycerin Filled  
Return Line Indicating Gauge  
for 25 PSI Filter Applications  
2" Multi color

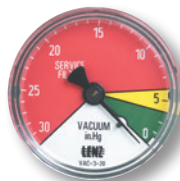
0-20 PSI Green  
21-24 PSI Yellow  
25-60 PSI Red (Service Filter)  
(To be used with "T" Indicator Port Location)



### 135080

Suction Line Indicating Gauge for  
5 PSI vacuum filter application  
2" Multi color

0-9" HG Green  
9-11" HG Yellow  
11-30" HG Red (Service Filter)  
(To be used with "S" Indicator Port Location)



### VAC-3-20

Suction Line Indicating Gauge  
for 3 PSI vacuum filter applications  
2" Multi color

0-3" HG Green  
4-6" HG Yellow  
6-30" HG Red (Service Filter)  
(To be used with "S" Indicator Port Location)

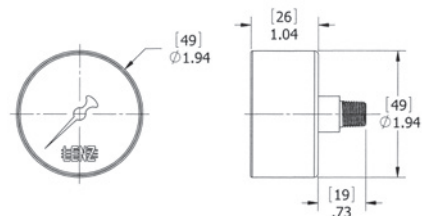


### Differential Indicator DP-75

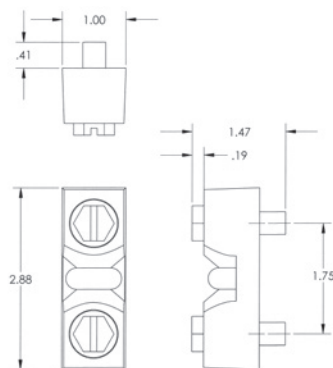
Simple differential sliding  
indicator which changes from  
green to red at 7 PSID.

0 - 7 PSID. Green Clean  
7 - 10 PSID. Red Service Filter  
CP Series (500, 750, 1010, 1280,  
1580)

\*Indicators ordered and shipped separately



### DIAL INDICATOR



### DP-75



# Electrical Filter Indicators

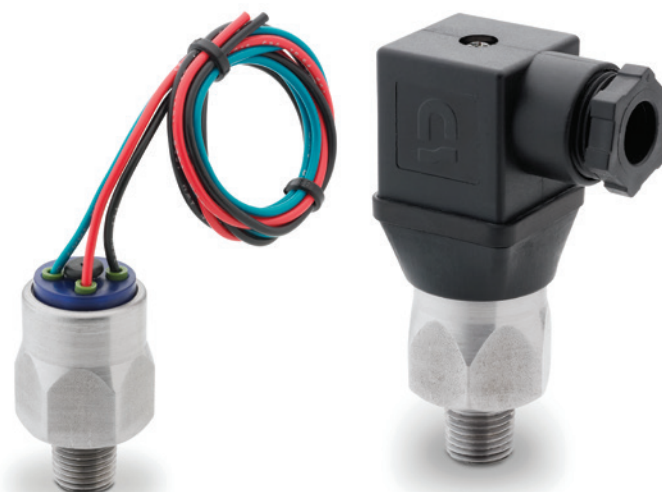
## Field Adjustable

### Specifications:

- 1/8 NPT connection
- 3 AMP 12/24 VDC, 125/250 VAC IP67
- +/- 2% repeatability of full set point range @ 70°F
- Operating temperature 40°F to +250°F (-40°C to 121°C)
- 1,000,000 cycles mechanical range
- Maximum pressure 500 (25 BAR) PSI
- Steel housing, zinc plated
- Buna N diaphragm
- SPDT snap action switch

### Options:

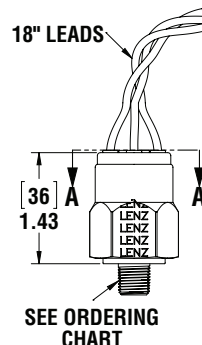
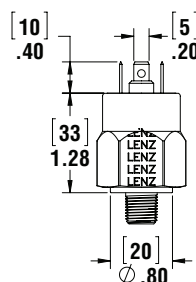
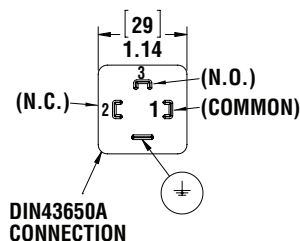
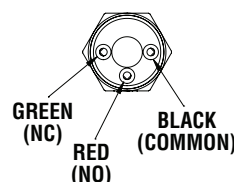
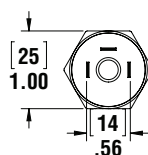
- EPDM seals -10°F – 250°F (-23°C – 121°C)
- Viton seals 0 – 250°F (-18°C – 121°C)
- Flying leads



LES-FL

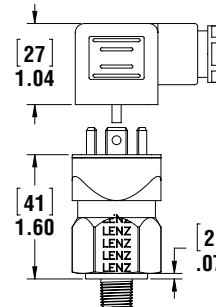
LES-HC

Model	Adjustment Range	Average Differential	Set Pressure
P1	3-20 PSI (.2-1.4 BAR)	2-5 PSI (.13-0.4 BAR)	15 PSI
P2	15-80 PSI (1.03-6 BAR)	4-7 PSI (.27-0.5 BAR)	22 PSI
V1	5-28 in Hg (160-948mb)	2-4 INHg (67-135mb)	5 Hg



SEE ORDERING CHART

LES-FL



LES-HC

## Switch Ordering Code

LES – P1 – 2N – B – HC –

Series	Adjustment Range	Thread	Seals	Electrical Connection	Options
LES	P1 3-20 PSI P2 15-80 PSI V1 5-30" HG Rising	2N 1/8" NPT 4N 1/4" NPT 4S 7/16"-20 6S 9/16"-18	B Buna V Viton E EPDM	FL Flying Leads HC Din Clamp	Omit SS Stainless Housing IL Ind Light

\*Indicators ordered and shipped separately

Switch can be used in AC or DC Service.  
For other options consult factory.  
Switch does not indicate differential pressure

See Technical Bulletin TB.FIL23.912, or further information at  
(Technical Data – [www.lenzinc.com](http://www.lenzinc.com))