



4-bolt Flanged Head Fittings

For Pipe

Length: Inches - Black;

Millimeters - Red.

Pressure: PSI - Black;

Megapascals - Red.

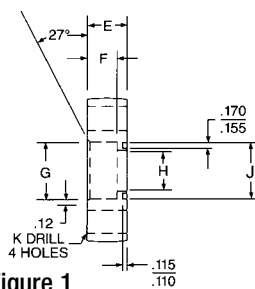


Figure 1

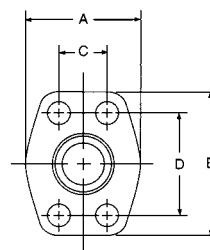


Figure 2

3000 PSI Flat Socket - Pipe (Code 61) Figure 1 & 2

| O-Ring Part Number Fig. 1 | Flat Face Fig. 2 | Pipe Size | Pad Size | A | B | C + .010 | D + .010 | E | F | G Dia. + .015 - .005 | H Dia. | J Dia. | K Dia. | * O Ring Part Number | * Socket Head Cap Screw Part Number | * Hex Head Cap Screw Part Number | * Hi Collar Lock Washer Part Number |
|---------------------------|------------------|--------------|--------------|---------------|---------------|----------------|-----------------|--------------|-------------|-------------------------------|--------------|----------------|---------------|----------------------------------|---|--|--|
| W4-8-8 | W61-8-8 | .50 12.7 | .50 12.7 | 1.813 46.0 | 2.125 53.9 | .688 12.0 | 1.500 38.1 | .75 19.0 | .56 14.2 | .855 21.7 | .50 12.7 | 1.000 25.4 | .344 8.73 | M345-15 | M477-10 | M522-11 | M478-4 |
| W4-12-12 | W61-12-12 | .75 19.0 | .75 19.0 | 2.06 52.3 | 2.56 65.0 | .875 22.23 | 1.875 47.63 | .75 19.0 | .19 4.8 | 1.062 26.97 | .75 19.0 | 1.250 31.75 | .406 10.31 | M345-19 | M477-5 | M522-11 | M478-1 |
| W4-16-16 | W61-16-16 | 1.00 25.4 | 1.00 25.4 | 2.31 58.7 | 2.75 69.8 | 1.031 26.19 | 2.062 52.37 | .88 22.4 | .25 6.4 | 1.328 33.73 | 1.00 25.4 | 1.560 39.62 | .406 10.31 | M345-24 | M477-6 | M522-12 | M478-1 |
| W4-20-20 | W61-20-20 | 1.25 31.8 | 1.25 31.8 | 2.88 73.2 | 3.12 79.2 | 1.188 30.18 | 2.312 58.72 | .94 23.9 | .25 6.4 | 1.672 42.47 | 1.25 31.8 | 1.750 53.85 | .469 13.49 | M345-27 | M477-7 | M522-13 | M478-2 |
| W4-24-24 | W61-24-24 | 1.50 38.1 | 1.50 38.1 | 3.25 82.6 | 3.69 93.7 | 1.406 35.71 | 2.750 69.85 | 1.19 30.2 | .44 11.2 | 1.922 48.82 | 1.50 38.1 | 2.120 53.85 | .531 13.49 | M346-3 | M477-8 | M522-14 | M478-3 |
| W4-32-32 | W61-32-32 | 2.00 50.8 | 2.00 50.8 | 3.81 96.8 | 4.00 101.6 | 1.688 42.88 | 3.062 77.77 | 1.38 35.0 | .50 12.7 | 2.406 61.11 | 2.00 50.8 | 2.495 63.37 | .531 13.49 | M346-6 | M477-9 | M522-15 | M478-3 |
| W4-40-40 | W61-40-40 | 2.50 63.5 | 2.50 63.5 | 4.28 108.7 | 4.50 114.3 | 2.000 50.80 | 3.500 88.90 | 1.75 44.4 | .75 19.0 | 2.906 73.81 | 2.50 63.5 | 3.000 76.20 | .531 13.49 | M346-10 | M477-14 | M522-16 | M478-3 |
| W4-48-48 | W61-48-48 | 3.00 76.2 | 3.00 76.2 | 5.16 131.1 | 5.31 134.9 | 2.438 61.93 | 4.188 106.38 | 2.12 53.8 | .88 22.4 | 3.547 90.09 | 3.00 76.2 | 3.620 91.95 | .656 16.66 | M346-15 | M477-16 | M522-18 | M478-5 |

6000 PSI Flat Socket - Pipe (Code 62) Figure 1 & 2

| O-Ring Fig. 1 Part Number | Flat Face Fig. 2 Part Number | Pipe Size | Pad Size | A | B | C | D | E | F | G | H | K Thread UNC-2B | * O Ring Part Number | * Socket Head Cap Screw Part Number | * Hex Head Cap Screw Part Number | * Hi Collar Lock Washer Part Number |
|---------------------------|------------------------------|--------------|--------------|---------------|---------------|----------------|----------------|---------------|----------------|----------------|---------------|-----------------------|----------------------------------|---|--|--|
| W59-8-8 | W60-8-8 | 0.50 12.7 | 0.50 12.7 | 1.94 49.2 | 2.30 58.4 | 0.718 18.2 | 1.594 40.4 | 0.870 22.1 | 0.560 14.2 | 0.855 21.72 | 0.500 12.7 | 5/16-18 | M345-15 | M477-10 | M522-11 | M478-4 |
| W59-12-12 | W60-12-12 | 0.75 19.0 | 0.75 19.0 | 2.38 60.4 | 2.81 71.3 | 0.937 23.8 | 2.00 50.13 | 1.250 31.7 | 0.560 14.22 | 1.063 27.0 | 0.750 19.0 | 3/8-16 | M345-19 | M477-23 | M522-11 | M478-1 |
| W59-16-16 | W60-16-16 | 1.00 25.4 | 1.00 25.4 | 2.75 69.8 | 3.19 81.0 | 1.094 27.79 | 2.250 57.15 | 1.00 25.4 | .38 9.6 | 1.33 33.8 | 1.00 25.4 | 7/16-14 | M345-24 | M477-29 | M522-13 | M478-2 |
| W59-20-20 | W60-20-20 | 1.25 31.8 | 1.25 31.8 | 3.06 77.7 | 3.75 95.2 | 1.250 31.75 | 2.625 66.68 | 1.25 31.8 | .56 14.2 | 1.67 42.4 | 1.25 31.8 | 1/2-13 | M345-27 | M477-7 | M522-14 | M478-3 |
| W59-24-24 | W60-24-24 | 1.50 38.1 | 1.50 38.1 | 3.75 95.2 | 4.44 112.8 | 1.438 36.53 | 3.125 79.38 | 1.50 38.1 | .75 19.0 | 1.92 48.8 | 1.50 38.1 | 5/8-11 | M346-3 | M477-11 | M522-19 | M478-5 |
| W59-32-32 | W60-32-32 | 2.00 50.8 | 2.00 50.8 | 4.50 114.3 | 5.25 133.4 | 1.750 44.45 | 3.812 96.82 | 1.75 44.4 | .88 22.4 | 2.41 61.2 | 2.00 50.8 | 3/4-10 | M346-6 | M477-17 | M522-20 | M478-7 |

500 PSI Flat Socket - Pipe Figure 1 & 2

| O-Ring Fig. 1 Part Number | Flat Face Fig. 2 Part Number | Pipe Size | Pad Size | A | B | C + .010 | D + .010 | E | F | G Dia. + .015 - .005 | H Dia. | J Dia. | K Dia. | * O Ring Part Number | * Socket Head Cap Screw Part Number | * Hex Head Cap Screw Part Number | * Hi Collar Lock Washer Part Number |
|---------------------------|------------------------------|---------------|---------------|---------------|---------------|----------------|-----------------|--------------|------------|-------------------------------|---------------|-----------------|---------------|----------------------------------|---|--|--|
| W72-48-48 | W91-48-48 | 3.00 76.2 | 3.00 76.2 | 5.12 130.5 | 5.31 134.9 | 2.438 61.93 | 4.188 106.38 | 1.38 35.0 | .25 6.4 | 3.547 90.09 | 3.00 76.2 | 3.620 91.95 | .656 16.68 | M346-15 | M477-20 | M522-24 | M475-5 |
| W72-56-56 | W91-56-56 | 3.50 88.9 | 3.50 88.9 | 5.50 139.7 | 6.00 152.4 | 2.750 69.85 | 4.750 120.65 | 1.44 36.6 | .25 6.4 | 4.047 102.79 | 3.50 88.9 | 4.105 104.26 | .656 16.66 | M346-19 | M477-20 | M522-24 | M478-5 |
| W72-64-64 | W91-64-64 | 4.00 101.6 | 4.00 101.6 | 6.00 152.4 | 6.38 162.1 | 3.062 77.77 | 5.125 130.18 | 1.50 38.1 | .25 6.4 | 4.578 116.28 | 4.00 101.6 | 4.605 116.97 | .656 16.66 | M346-23 | M477-11 | M522-19 | M478-5 |